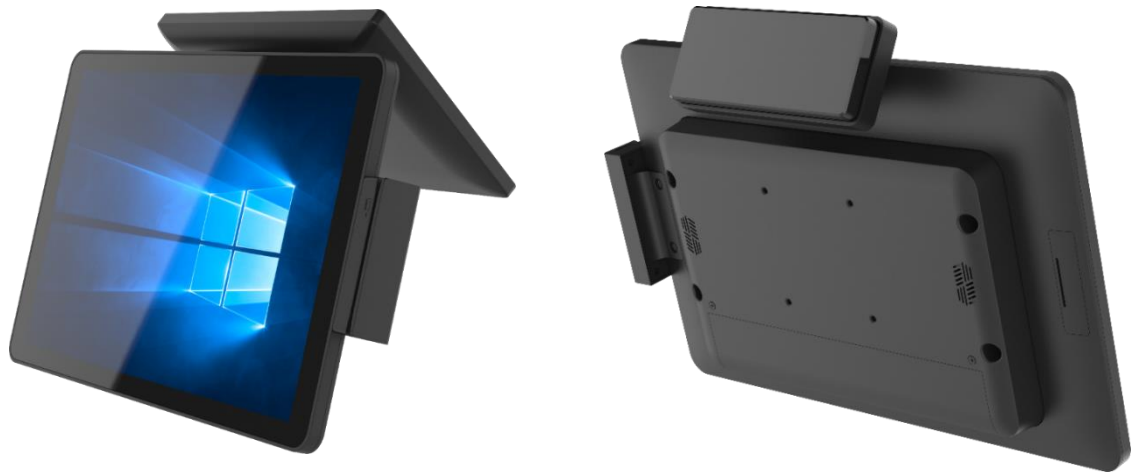


# 15.6" All in One SPOS

## MA2N Alder Lake N Series

- ◇ Robust All-in-One POS terminal integrated with a wide variety of peripherals.
- ◇ Panel PC structure design to save Total Logistics Cost (TLC).
- ◇ Modular CPU box design allows easy adaptation to diverse Intel CPU platforms.
- ◇ Standard VESA holes to support various stands.
- ◇ Easily upgrade memory and storage by removing 4 screws.

## Features



**TYPE A**

**TYPE B**

**TYPE D+**

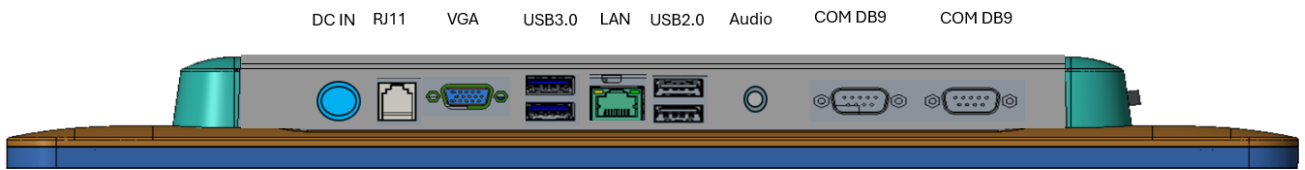
**TYPE E**

**Various stands support**

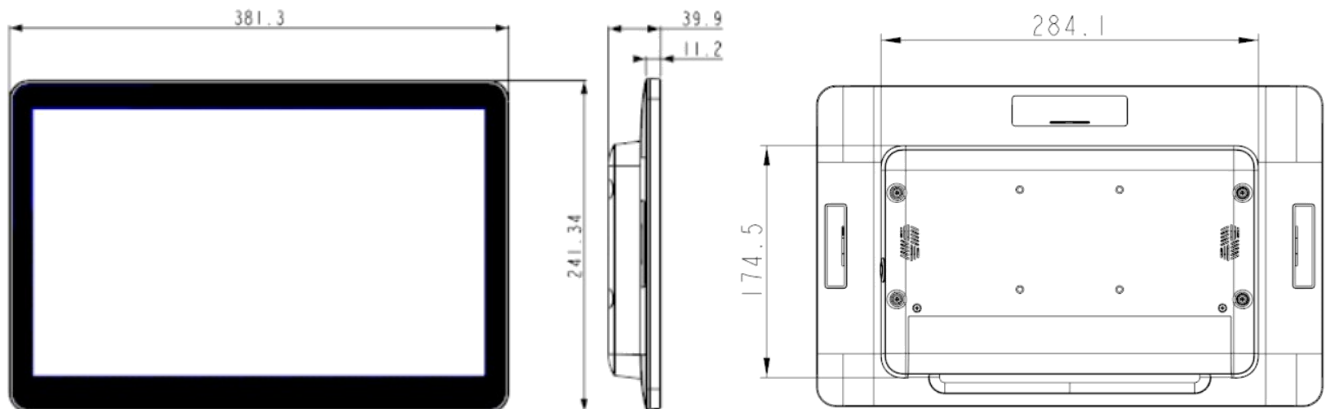
# Product Specifications (MA2N)

<b>Touch Panel</b>	PCT	PCT (Projected Capacitive Touch) Support 10 points Multi-Touch	
<b>LCD Panel</b>	15.6"	15.6" FHD 1920 x1080 (300 nits)	
<b>CPU</b>	FCBGA	Alder Lake-N N97, N100 or N300	
<b>Memory</b>	SO-DIMM	DDR4 x 1, Up to 16GB	
<b>Storage</b>	m.2 2280 NVMe	m.2 2280 M-key slot x 1	
<b>Interface</b>	Cash Drawer	Cash Drawer supported 12V	
	Power Input	DC12V (Power Jack 4 pin with Lock)	
	Audio Connector	3.5 mm audio jack x 1	
	USB	USB 2.0 x 2 , USB3.0 x 2	
		Option Internal USB 2.0 x 4 (2 x 9 pin header)	
	COM	RS232 (DB9) x 2	
	Display	D-Sub x 1	
LAN	Giga LAN x 1		
<b>Other</b>	Power Switch	Power On / Off switch x 1	
	AC Adaptor	12V	
	VESA Holes	75 x 75 mm	
	Operating Temperature	0 ~ 40 °C ( 32 ~ 104 °F)	
	Storage Temperature	-20 ~ 60 °C (-4 ~ 140 °F)	
	Dimension	381(W) x 39.9 (D) x 241.3 (H) mm / 15 (W) x 1.6 (D) x 9.5 (H) inch	
	Weight w/o VESA Stand	G.W. 3.6 Kg / 7.9 lbs ; N.W. 2.6 Kg / 5.73 lbs	
	Accessories	Optional MSR, VFD customer display, 10.1" 2nd display / USB interface Peripherals	
	Regulation	CE, FCC & LVD	

## I/O Interface (MA2N)



## Dimensions (mm)



All information contained in this document is subject to change without prior notice.